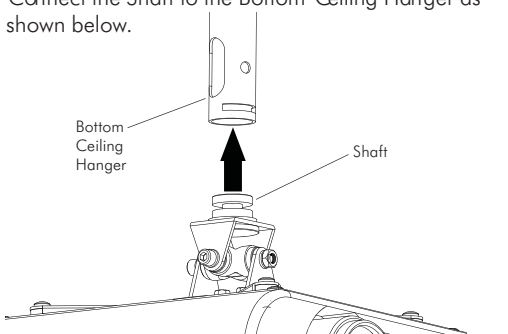


## G Attaching the Ceiling Mount Assembly to the Ceiling Hanger

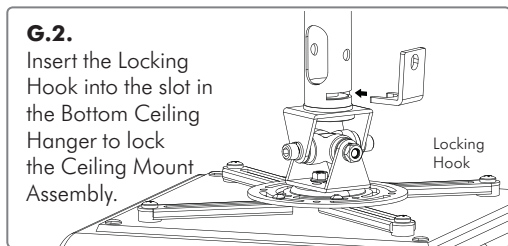
### G.1.

Connect the Shaft to the Bottom Ceiling Hanger as shown below.



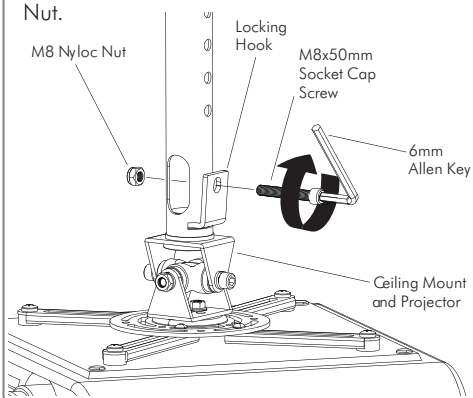
### G.2.

Insert the Locking Hook into the slot in the Bottom Ceiling Hanger to lock the Ceiling Mount Assembly.



### G.3.

Tighten the Locking Hook with the supplied M8x50mm Socket Cap Screw and the M8 Nyloc Nut.



**Tip:** When the projector requires servicing, remove the projector via this easy disconnection point to save time.

## IMPORTANT

Please read these instructions before commencing installation as faulty installation could result in injury. Atdec assumes no responsibility for faulty installations.

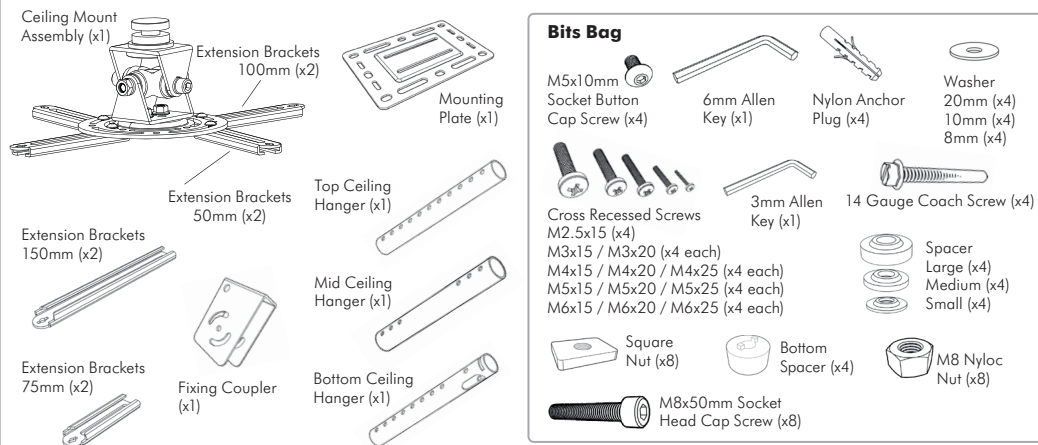
# Installation Instructions

## telehook®

### Projector Ceiling Mount | Pole

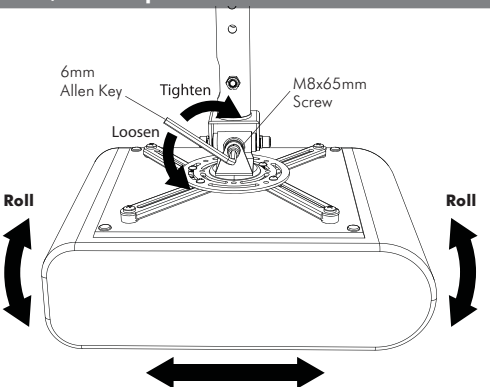
**WARNING:** This bracket supports up to 15kg (33lbs). It is dangerous to overload this bracket.

## Component Checklist



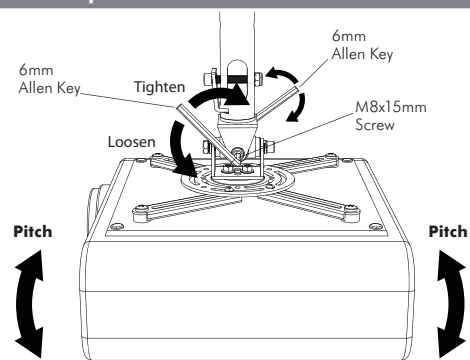
## H Adjusting the Projector

### Roll / Shift Adjustment



To make Roll/Shift adjustments, first ensure the weight of the projector is supported. Then loosen the M8x65mm Screw with the supplied 6mm Allen Key, and adjust to your desired position. Re-tighten the screw firmly.

### Pitch Adjustment



To make Pitch adjustment, first ensure the weight of the projector is supported. Then loosen both M8x15mm Screws with the supplied 6mm Allen Key, and adjust to your desired position. Re-tighten both screws firmly.

## WARNING

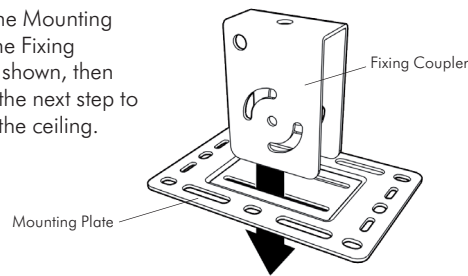
- Ensure the Ceiling can support the total weight of the Projector and the Universal Ceiling Mount.
- All bolts and screws must be used at the designated points as per installation instructions to prevent damage to the projector unit, or injury.
- DO NOT** install near an air conditioner or where there is excessive dust and smoke.
- Ensure the projector is mounted so that it is not possible for undue load to be placed on the bracket.

## A Component Checklist

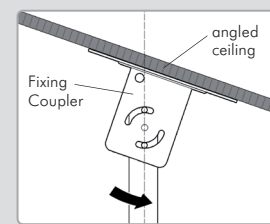
Check you have received all parts against the Component Checklist above.

## B Assembling the Mounting Plate and the Fixing Coupler

Assemble the Mounting Plate and the Fixing Coupler as shown, then move onto the next step to attach it to the ceiling.



**NOTE**  
If mounting onto an angled ceiling, ensure the Fixing Coupler is in the correct orientation.



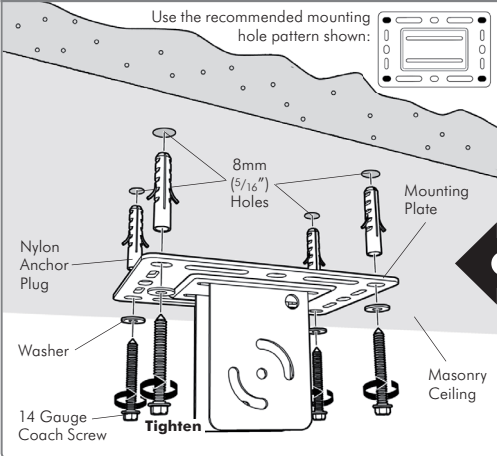
Installation Complete



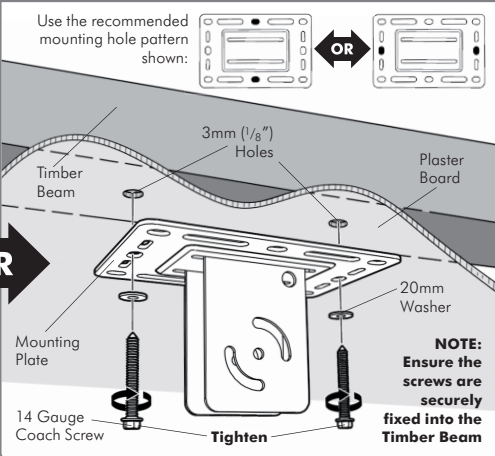
## C Installing the Ceiling Plate

Choose the appropriate installation procedure depending on your ceiling type.

### Masonry

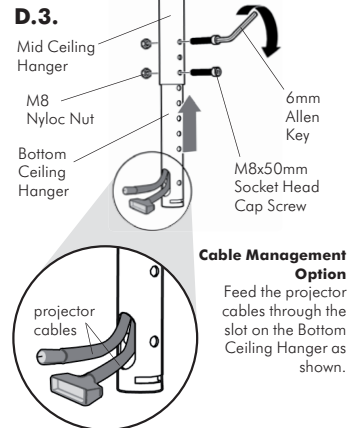
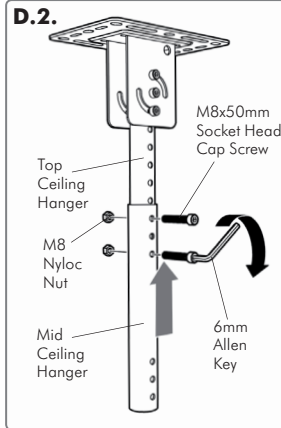
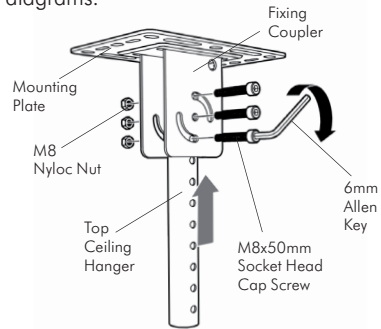


### Plaster Board



## D Attaching the Ceiling Hangers to the Fixing Coupler

**D.1.** Install the Ceiling Hangers to the required height as shown in the following diagrams.

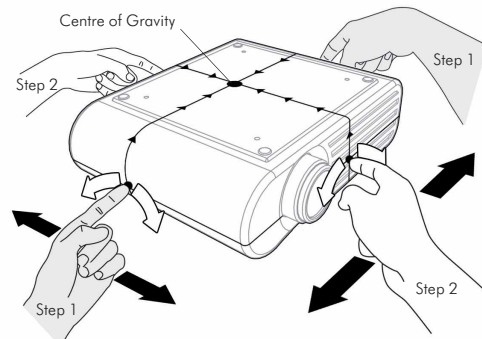


## E Finding the Centre of Gravity of the Projector

**E.1.** Pick up the projector using both of your index fingers. Move your fingers along the side of the Projector (follow Step 1) until it is level. Remember the balance point.

**E.2.** Repeat this process for the perpendicular side (follow Step 2)

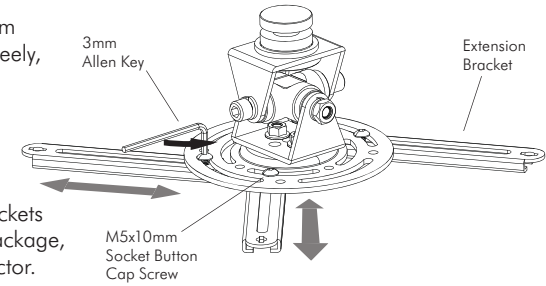
**E.3.** Where both balance points meet is the Centre of Gravity of your projector. Use a pencil to mark this point.



## F Attaching the Ceiling Mount Assembly to the Projector

### F.1.

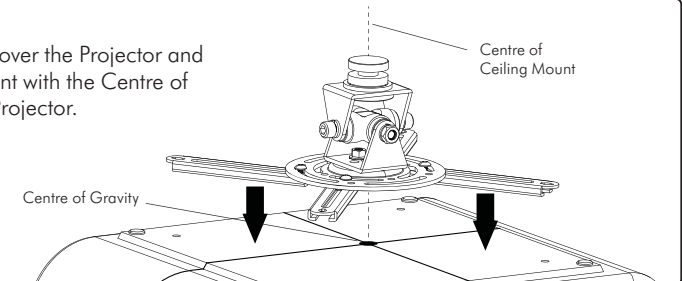
Loosen the M5x10mm Screws using the supplied 3mm Allen Key until you can slide the extension brackets freely, as shown.



You may need to replace the attached Extension Brackets with the additional longer brackets supplied in the package, to suit the mounting hole configuration of your projector.

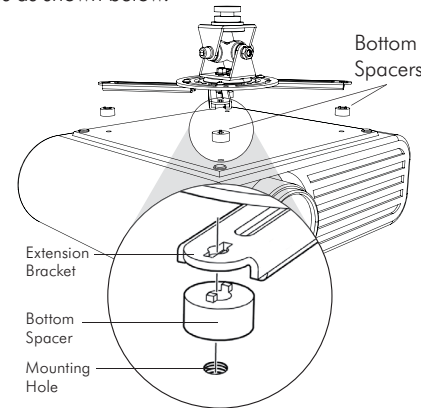
### F.2.

Place the Ceiling Mount Assembly over the Projector and align the centre of the Ceiling Mount with the Centre of Gravity marked previously on the Projector.



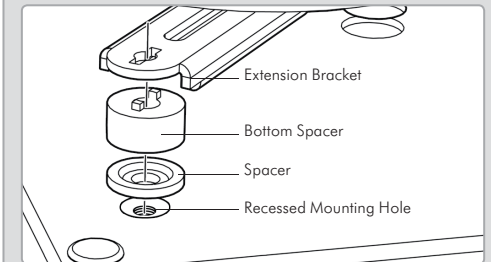
### F.3.

Place the Bottom Spacers in between the Extension Brackets and the Projector, and align the mounting holes as shown below.



### NOTE

**If your mounting holes are recessed into the projector, you may need to use the additional Spacers supplied in the Bits Bag. Please select the appropriate Spacers according to the design of your projector.**



### F.4.

Select the correct Mounting Screws from the Bits Bag and firmly screw the Ceiling Mount Assembly onto your Projector.

Once this is done, the Projector Ceiling Mount Assembly is ready to be mounted onto the Bottom Ceiling Hanger.

